

Residual current operated circuit breaker, 2-pole, Type AC, In: 40 A, 300 mA, Un AC: 230 V



Model	
Product brand name	SENTRON
Product designation	RCCB
Design of the product	Instantaneous
General technical data	
Number of poles	2
Size of installation devices / acc. to DIN 43880	1
Protection against electrical shock	Finger and back-of-hand safe
Short-circuit current / of series fuse / maximum permissible	63 A
Short-circuit current rating	10 kA
circuit-breaker / Design	5SV4
Mechanical service life (switching cycles) / typical	10 000
Switching function / short-term delayed	No
Overvoltage category	III
Supply voltage	
Operating current / at AC / rated value	40 A
Supply voltage	

<ul style="list-style-type: none"> • at AC / rated value 	230/400 V
<ul style="list-style-type: none"> • for testing equipment / minimum 	100 V
Operating frequency	50 Hz
Supply voltage frequency	
<ul style="list-style-type: none"> • rated value 	50 Hz

Protection class

Protection class IP	IP20, if the distribution board is installed, with connected conductors
---------------------	---

Switching capacity

Switching capacity current / according to IEC 61008-1 / rated value	0.5 kA
---	--------

Dissipation

Power loss [W] / for rated value of the current / at AC / in hot operating state / per pole	1.6 W
---	-------

Current

Tripping residual current / rated value	300 mA
Tripping residual / rated value / derated current	
<ul style="list-style-type: none"> • at 40 Cel 	40 A
<ul style="list-style-type: none"> • at 45 Cel 	38.1 A
<ul style="list-style-type: none"> • at 50 Cel 	35.59 A
<ul style="list-style-type: none"> • at 55 Cel 	32.29 A
<ul style="list-style-type: none"> • at 60 Cel 	28.19 A
<ul style="list-style-type: none"> • at 65 Cel 	23.3 A
<ul style="list-style-type: none"> • at 70 Cel 	17.62 A
Type of fault current	AC
I ² t-value / permissible	58 000 A ² ·s

Product details

Product feature / silicon-free	Yes
Product extension / can be installed / supplementary devices	Yes

Connections

Connectable conductor cross-section / solid	
<ul style="list-style-type: none"> • minimum 	0.75 mm ²
<ul style="list-style-type: none"> • maximum 	35 mm ²
Connectable conductor cross-section / stranded	
<ul style="list-style-type: none"> • minimum 	0.75 mm ²
<ul style="list-style-type: none"> • maximum 	35 mm ²
Tightening torque / with screw-type terminals	
<ul style="list-style-type: none"> • minimum 	2.5 N·m
<ul style="list-style-type: none"> • maximum 	3 N·m

Position / of power supply cord	top or bottom
---------------------------------	---------------

Mechanical Design

Height	90 mm
Width	36 mm
Depth	70 mm
Installation depth	70 mm
Number of width units	2
Mounting type	DIN rail (REG)
Mounting position	any
Net weight	194 g

Environmental conditions

Ambient temperature	
<ul style="list-style-type: none"> • minimum • maximum 	-25 °C 45 °C
Ambient temperature / during storage	
<ul style="list-style-type: none"> • minimum permissible • maximum permissible 	-40 °C 75 °C

Certificates

Reference code	
<ul style="list-style-type: none"> • acc. to DIN EN 61346-2 • acc. to DIN EN 81346-2 	F F

General Product Approval	Declaration of Conformity	other	Railway
--------------------------	---------------------------	-------	---------



CCC



IMQ

[Miscellaneous](#)



EG-Konf.

[Miscellaneous](#)

[Vibration and Shock](#)

Railway

[Confirmation](#)

Further information

Information- and Downloadcenter (Catalogs, Brochures,...)

<http://www.siemens.com/lowvoltage/catalogs>

Industry Mall (Online ordering system)

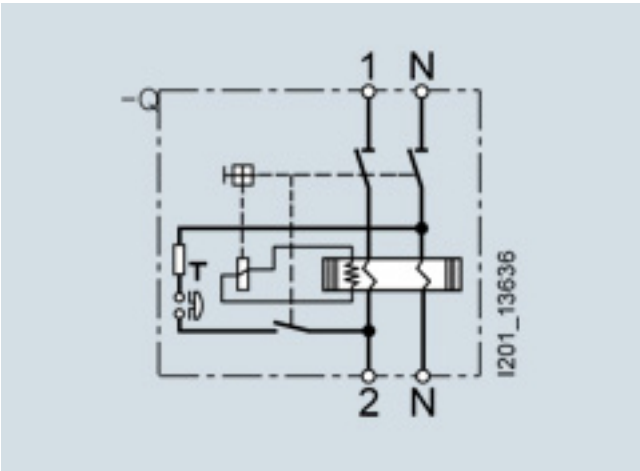
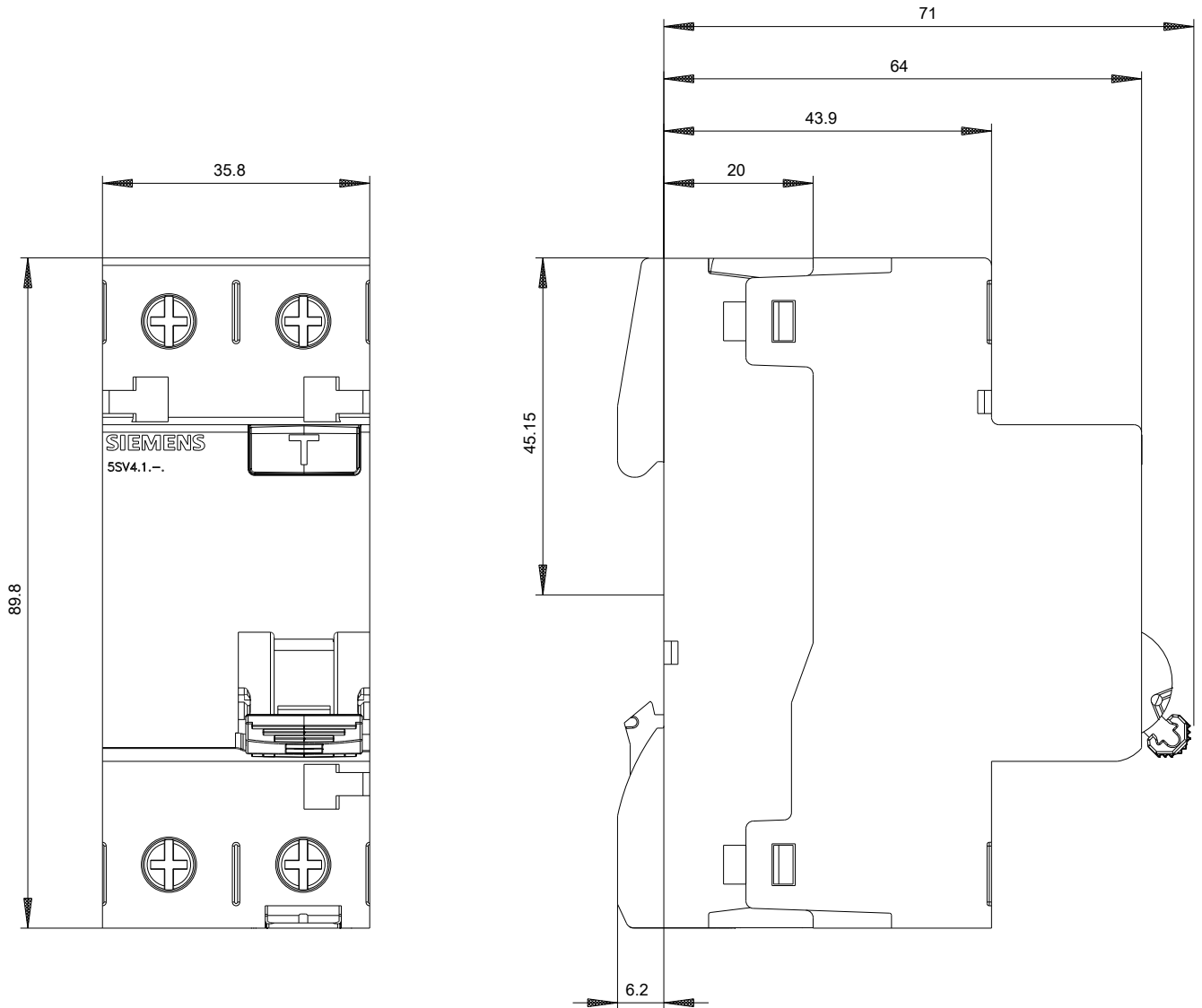
<https://mall.industry.siemens.com/mall/en/en/Catalog/product?mlfb=5SV4614-0>

Service&Support (Manuals, Certificates, Characteristics, FAQs,...)

<https://support.industry.siemens.com/cs/ww/en/ps/5SV4614-0>

Image database (product images, 2D dimension drawings, 3D models, device circuit diagrams, ...)

http://www.automation.siemens.com/bilddb/cax_en.aspx?mlfb=5SV4614-0



-CB



